

Document Code: TQSM	TQSoft Manual	Page 121 of 131
Date: 14/01/08 Revision 12		

Appendix S Yokogawa DX2000/1000/DX200P/DX100P

TQSoft version 5 supports the Yokogawa DX Series of recorders with the Yokogawa DX driver.

DX series unit set-up

Ensure an **Administrator** is setup on the recorder with '**Comm+Key**' access. Once communications are successfully established, TQS will configure channel setup and scanning rates.

DXP series unit set-up

Ensure an **Administrator** is setup on the recorder with '**Comm+Key**' access. The TQS setting *Username for Recorder* is used for the Recorder *Username* and *ID*. Once communications are successfully established, TQS will configure channel setup and scanning rates.

Communication set-up

Connect the crossover cable (10/100BaseT cable) between the PC and the DX unit, or connect both the PC and the DX unit to the network or hub.

DX Communication Settings

TQSoft is designed to work with the factory default communications settings. This procedure can be used to verify the settings of the Ethernet TCP/IP communication of the DX Series unit:

1. Press the **menu** button.
2. Then hold down the **Func** button for several seconds until the *Basic Setting Mode* appears.
3. Scroll down to *Communication (Ethernet)*.
4. Use the right side arrow button and select *IP-Address, Host Settings*.
 - a. The DHCP setting should be **Not**.
 - b. The IP address should be **192.168.1.101**.
 - c. The Subnet mask should be **255.255.255.0**.
 - d. The default gateway should be **0.0.0.0**
 - e. Host settings should be blank.
5. Press Esc button twice to exit and then scroll up to *Login*.
6. Scroll down to *Admin settings*.
7. Verify that an Administrator is setup with:
 - a. Mode: **Comm**
 - b. Note the username and password for use in TQSoft.
8. Exit (save if necessary) and choose *End* on the main *Settings* menu.

DXP Communication Settings

1. Use this procedure to setup the DXP unit from factory default setting.
2. Press the Menu Button.
3. Scroll to System Mode.
4. Select Communication.
5. Select Ethernet/Serial.
 - a. The IP address should be **192.168.1.101**.
 - b. The Subnet mask should be **255.255.255.0**.
 - c. The default gateway should be **0.0.0.0**
6. Exit and select Admin Tool.
7. Then Admin Settings.
8. Setup an Administrator with
 - a. Same Username and ID
 - b. **Comm+Key** access.

Document Code: TQSM	TQSoft Manual	Page 122 of 131
Date: 14/01/08 Revision 12		

Computer Communications Settings

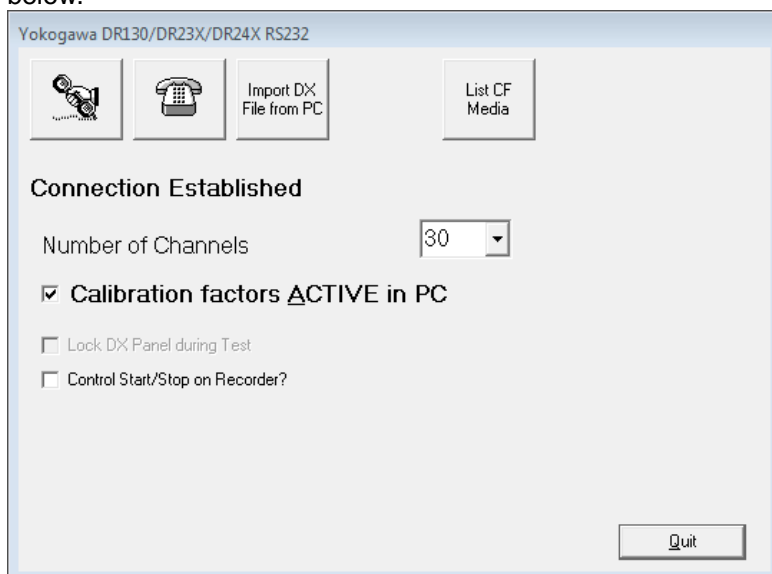
To configure the TCP/IP communication on the PC running TQSoft, set the computer's IP address to a value having the first part of the IP address equal to the IP of the DX unit: 192.168.1.X . As an example **192.168.1.100** and its subnet mask to **255.255.255.0**.

TQSoft Communications Settings

1. Start TQSoft and choose *Select Type of Logger* on the *Logger* drop down menu.
2. Scroll down to *Yokogawa DX*.
3. Check that the *Slave IP address* matches the *DX Communication Settings IP address*.
4. Check that the *Username* and *Password* match an *Admin Setting* in DX Communications Settings procedure above. (If using the DX100P/DX200P ensure the Administrator setup in the unit has same username and password.)
5. Press *OK*.
6. User will then be presented with the *channel configuration* selection window. The *Universal* one can be selected and the unit will be configured for all type T channels. Pressure and Humidity channels can be added later.
7. The *logger control* window should now appear as below. System is operational. *Quit* button can be pressed and calibration and tests performed.

Yokogawa DX Logger Control Window in TQSoft

If communications are successfully established the Logger Control window should appear as below.



This button will re-connect the PC to the unit.



This button will disconnect the PC from the unit.

The **Calibration factors Active** checkbox is very important.

If checked **ON**...

Document Code: TQSM	TQSoft Manual	Page 123 of 131
Date: 14/01/08 Revision 12		

- The calibration adjustments will be made in TQSoft only
- The Yokogawa unit will not display or store calibrated data.

If checked **OFF**...

- The calibration adjustments will be made in the Yokogawa unit, so all data subsequently stored in the Yokogawa will be calibrated.
- The 21CFRpart11 compliant aspect of the system may be compromised depending on the management of the Yokogawa unit.
- If user starts a calibration in TQSoft, TQSoft will automatically remove all calibration from the Yokogawa unit. This is necessary so that calibration in TQSoft is not performed 'on top of' existing calibration settings in the Yokogawa unit. After successful completion of calibration, the updated calibration data is put into the Yokogawa unit.

The **Control Start/Stop on Recorder** will make TQSoft automatically press the Start button on the recorder when user presses Start Logging in TQSoft.

The **Import DX File from PC** button will allow user to select a Yokogawa DAD format file on PC for import into a TQSoft record. See points below under *List CF Media*.

The **List CF Media** button allows user to list and select a Yokogawa DAD format file on the Yokogawa unit CF card for import into a TQSoft record. Points above apply.

- User is required to setup or select a TQSoft Test Specification for the import.
- This allows user to reuse standard Test Specifications to present and report test data.
- Once import process is complete a new test will appear in the TQSoft Historic Test windows. (use the Historic Tests button on main toolbar).

Channel Configuration Settings

If you require use of a voltage channel for measuring Pressure or Humidity, TQS allows user to set this up under *Setup* then *Edit Channel Configuration*, select desired channel, then select from the *DC Voltage* options. Scale and span boxes will appear allowing the sensor to be configured correctly.

Notes:

TQSoft sets the DX Scan Interval to NORMAL mode, not FAST mode.

At present TQSoft does not change the Recorder Scan Interval with XV command. Seems to suffice to use FR to change FIFO buffer acquisition rate only. Also TQS scan Interval resolves to only 1sec, 2 sec & 5 secs for DX.