

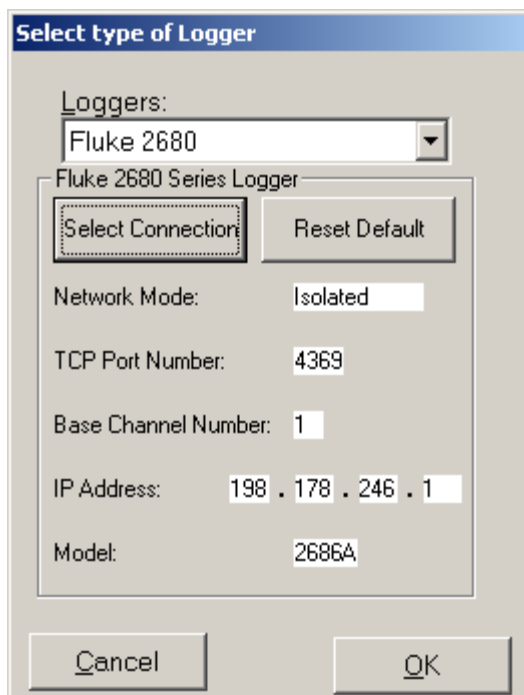
Document Code: TQSM	TQSoft Manual	Page 110 of 131
Date: 14/01/08 Revision 12		

Appendix O Fluke 2680 and NetDAQ Operations

- Please note that if you wish to use these drivers you will need first to install the [NTool32_DLL.exe](#) from the CD in the [Fluke2680Support](#) folder.

For full explanation of Fluke 2680 and NetDAQ TCP/IP communication protocols please consult the relevant Fluke documentation, for example the "Getting Started" manual that is supplied with the instrument. This manual assumes that the computer and Fluke logger communication parameters and connection cabling are set up appropriately, as specified therein, for the TCP/IP *Network Mode* chosen by the user. In particular for *Isolated Mode* the computer's IP address must be set to 198.178.246.100 and its subnet mask to 255.255.255.0.

Please note that once the Fluke is selected as the active logger in TQSoft, the type of inputs list in the Channel Configuration will be customized for the Fluke. So it is best to configure a channel configuration after setting up the logger as active logger successfully.



To setup the 2680 or NetDAQ for *Isolated Mode* communications:

1. Connect the crossover cable (10/100BaseT cable) supplied by Fluke and switch the logger on.
2. On the Fluke front panel verify that the Base Channel Number (BCN) is set to 1 for NetDAQ (10 for 2680).
3. On the Fluke front panel verify that the Network Mode is set to *Isolated*.
4. To setup the PC for *Isolated Mode* communications:
5. Set the PC IP address and subnet mask to the values mentioned in opening paragraph.
6. Connect the cable.

Start TQSoft

1. On the PC, change to IP address and subnet mask to values mentioned in opening paragraph. If unsure how to do this please consult the Fluke 'Getting Started' Guide.

Document Code: TQSM	TQSoft Manual	Page 111 of 131
Date: 14/01/08 Revision 12		

2. Start TQSoft.
3. On Logger menu select Type of Logger and select Fluke2680 or NetDAQ.
4. If there was a previous connection to a Fluke logger those used for the most recent such connection will be loaded and displayed.
5. The default values for these are: Isolated, 4369, 10, 198.178.246.10 and 2640A, which are suitable for a direct connection to a NetDAQ. Or : Isolated, 4369, 1, 198.178.246.1 and 2686A Fluke 2680 model 2686A, which has a PC card. These will be displayed when there has been no previous connection to a Fluke logger
6. Clicking the *Select Connection* button will lead cause the form

to be displayed as shown. This form enables editing of the CCF.cfg file, which holds sets of Fluke 2680 and NetDAQ loggers' communication parameters. TQSoft can only access such a logger if it is registered in this file.

- a. Clicking *Select Instrument* dropdown shows this list. For each logger the Base Channel Number, Model Name and IP Address are shown. If the selected *Network Mode* is Isolated the IP number shown is the Isolated one 198.178.246.XX, where XX is the BCN number, otherwise the General one is shown.
 - b. On selection from the list a logger becomes the form's "selected Instrument" and these properties are displayed in the **Instrument** area. Clicking *OK* will close the form and these selected Instrument parameters will be shown on the *Select type of logger* window.
 - c. On selection of a logger from the list the *Delete* button will become operable and some of the displayed fields become editable or selectable. When the *Network Mode* is Isolated the *TCP Port Number* and the *IP Address* fields will NOT be editable.
7. On the *Select type of logger* form if the *OK* button is clicked the software will attempt to verify that communication with a logger can be established with the displayed communication parameters. If this succeeds a message is displayed giving details of the logger, the form is closed and TQSoft initiates "real time out of test (no logging)" mode for the selected logger.

<i>Document Code: TQSM</i>	TQSoft Manual	Page 112 of 131
<i>Date: 14/01/08 Revision 12</i>		

8. User will then be presented with the channel configuration selection window. As mentioned earlier it is best to press cancel here and proceed straight to the *Channel Configuration* option on the *Setup* menu.
9. Choose a channel configuration that is spare or will not be used and modify the name text box to reference 2680 or NetDAQ.
10. Configure each channel according to the connections in the Fluke Input modules, setting any surplus channels to *OFF*.
11. Please note here that the locations do not have to be set yet. This is better done in the *Test Specifications*.
12. When all channels programmed press *OK* and answer *Yes* to use now question.
13. The logger should now scan at the default rate of 5 seconds for 'background' scanning. The channels can be viewed with the *Inputs Display* button.
14. The logger should now be operational and can be calibrated and then a test performed.
15. If Input Modules are re-moved and re-configured TQSoft should be re-started, on re-start TQSoft will set any missing channels to *OFF*.

NetDAQ Scan Speed Setting Adjustment

To modify the setting:

1. Exit TQSoft.
2. Load the file *LOGSYS.INI* in the *LOGSYS* folder into a text editor.
3. Locate the section "*General*"
4. Locate, or add the entry:
 - "*Fluke NetDAQ Speed Setting=0*" for slow most accurate.
 - "*Fluke NetDAQ Speed Setting=1*" for medium speed less accurate.
 - "*Fluke NetDAQ Speed Setting=2*" for fast least accurate.

Then restart TQSoft.